

# SIDE SCRAPER STORE

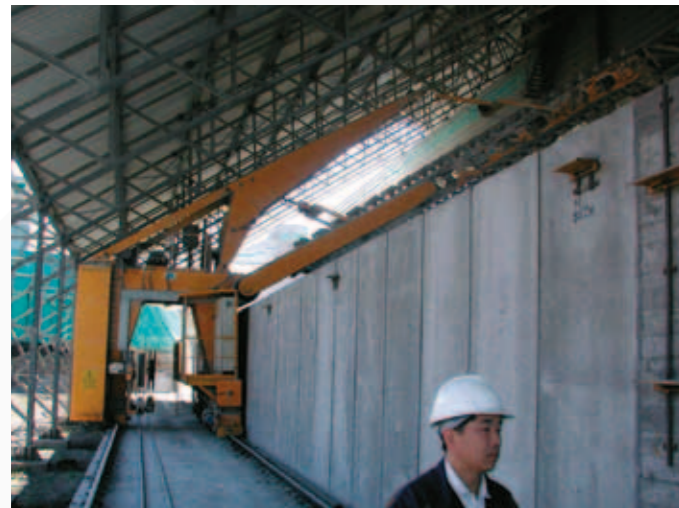
expanding



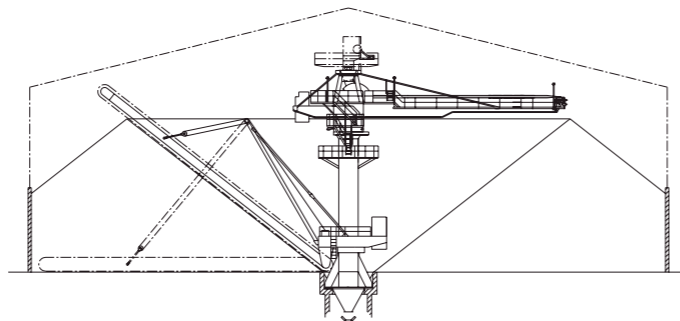


## SIDE SCRAPER STORE BY AMECO

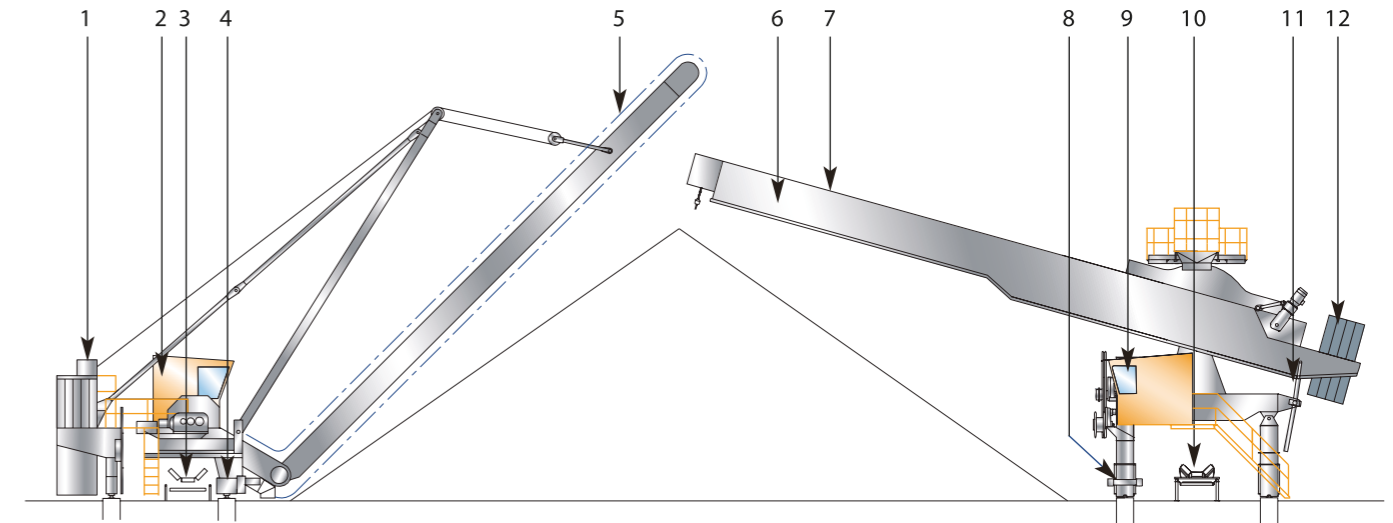
The side scraper is used in a production line as small bulk material buffer store.  
The store operates with stockpiles placed in line. While building up one pile, another pile is being reclaimed.  
The store can be circular or longitudinal.



The input material comes on a rubber-belt conveyor and is discharged through the stacker traveling on rails alongside the store. Its height above the top of the pile is kept at a minimum distance to reduce dust emission.  
Alternatively, stacking can take place by using a tripper car supported by a frame structure above the pile.  
The stacker and the portal scraper travel on separate rails along the store.  
The side scraper reclaims the material by means of a scraper chain which removes material from the pile, thanks to a scraper arm long enough to reach across the pile.  
The arm is made of a boom equipped with chains and blades for dragging the material to a belt conveyor.



Electrical feed for power and controls is accomplished by use of multicomposition cable and motor cable reel.  
The machine may be operated locally using controls located on operating console inside the cabin or from a remote location.



- |  |                           |
|--|---------------------------|
| 1 Hoist for raising and lowering chain | 7 Belt conveyor on jib    |
| 2 Operator cabin                       | 8 Stacker bogie           |
| 3 Outgoing belt conveyor               | 9 Operator cabin          |
| 4 Reclaimer bogie                      | 10 Incoming belt conveyor |
| 5 Scraper chain                        | 11 Hydraulic cylinder     |
| 6 Jib                                  | 12 Jib counterweight      |



General performance of AMECO equipment  
Max. capacity built : 2500m<sup>3</sup>/h – 1200TPH to 3000TPH  
Max span built : 63.5m – 65m

Being one of the historically main product of AMECO since 1932, we have a strong knowledge in this system and this type of machine is mainly handling woodchips.



#### HEADQUARTERS

43, rue du 21 Novembre  
68720 ILLFURTH - France  
Tél. : +33(0)3 89 25 59 69  
Fax : +33(0)3 89 25 59 68

#### NORTH AMERICAN OFFICE

James White  
VP Business Development  
AMECO North America  
1191 Chess Dr. Suite F  
Foster City, CA 94404  
Cell : (617) 818-3332  
Phone : (626) 628-1970

#### INDIA REPRESENTATIVE OFFICE

R.K Mittal  
506, Lakshmi Bhawan  
72, Nehru Place  
NEW DELHI - 110019  
Phone : +91-11-26484783

#### BRAZIL REPRESENTATIVE OFFICE

Alexandra Gaspar  
Rua Hungria, 574-Conj 112  
Jardim Europa  
São Paulo - SP 01455-000  
Cel : +55 11 9720-3720  
Phone : +55 11 2361 55 70